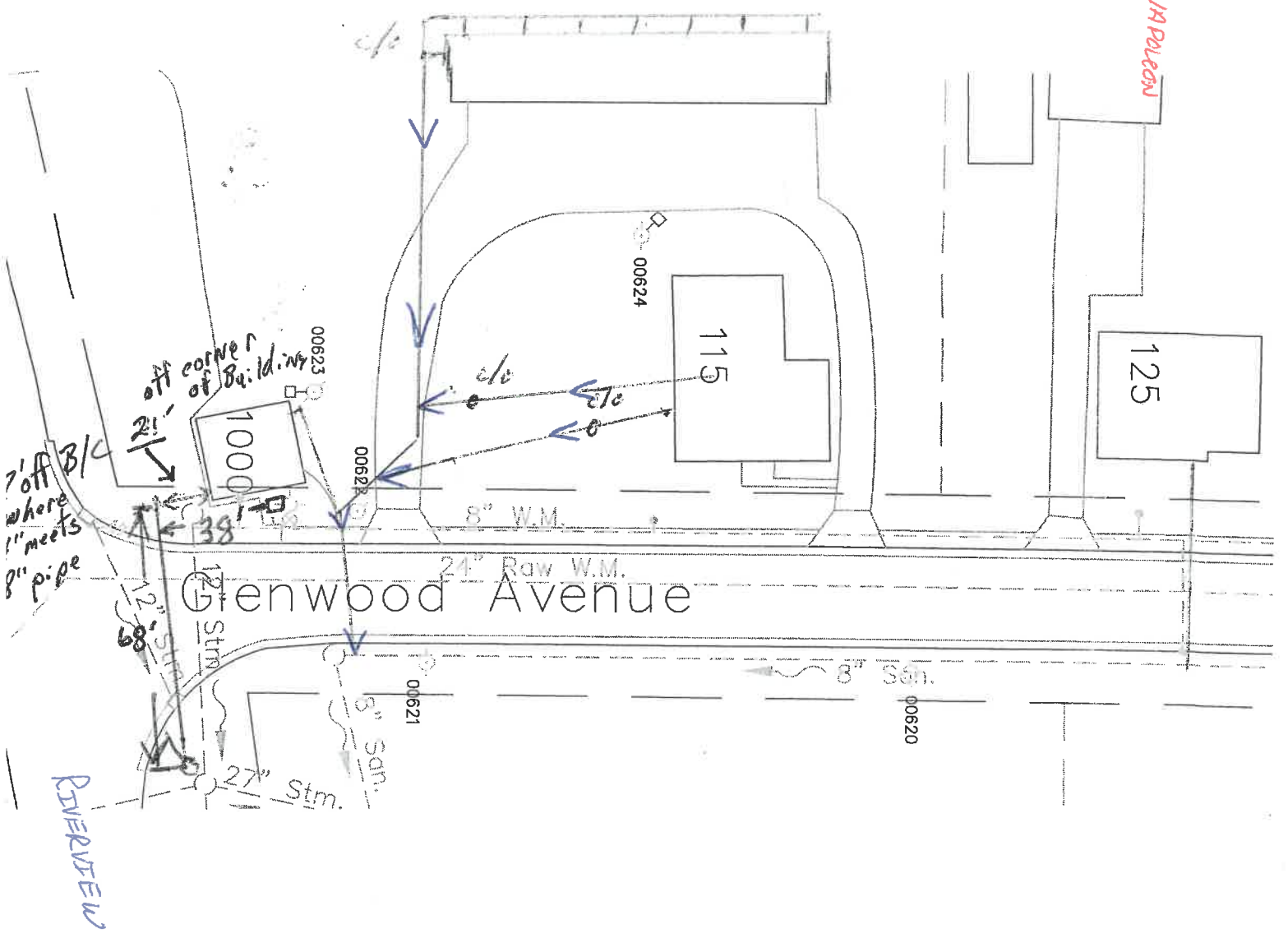


DATE: 2013
INVESTIGATED BY CITY OF NAPLES
SEWER DEPT.
1000 W. RIVERVIEW
SANITARY



BE MEASURED EDGE TO EDGE.

CONTRACTOR SHALL
Construction

SHOULD TIE
IT IN

Ex. 8" VCP Storm
(Appears to be Abandoned)
(per city personnel)

Stone Drive
Ex. Conc.
Drive Apron

FND. REBAR

Ex. 6" VCP Storm
(Possible Blind Tee? Outlet Unknown)
(as per city personnel)

LP
Ex. CB 10-2

REPLACE
w/ 2" 2B &
TIE IN TO
CB 10-1 w/ 12" PVC
Frosty
Boy
Address
#1000

Ex. 16" DIP Water
Ex. 24" PVC Raw Water

Glenwood Ave.

Ex. Treeline
(Typ.)

Ex. Toe of Slope
(Typ.)

Ex. 27" RCP Storm

Ex. Strm.
MH 10-4

Ex. San. MH
10-1

Ex. Gas
(Typ.)

Ex. 60.00' R/W

Ex. 12" VCP Storm

(ABANDON & PLUG AT MH)

PLUG

Ex. 12" VCP
Storm

Ex. CB
10-3

12" PVC Storm

Ex. 24" PVC
Raw Water

Ex. 8" VCP
Sanitary

LEAVE
R/W

5" PVC Storm

Ex. 27" RCP Storm

R/W

30.00'

CONNECT
461+00
TO
C.I.

8" VCP
SANITARY
(674)

Ex. Strm. MH 10-3

NEW STM
M.H.

462+00

Ex. 8" VCP Sanitary

sphalt

C: 460+79.42

Ex. 16" AC Water

FND. PK NAIL

Ex. 16" DIP Water

Ex. Gas
(Typ.)

PROJECT BENCHMARK #1

ABANDON & FILL
WITH FLOWABLE FILL

Ex. 12" VCP Storm
(Crushed at 24" Raw Water & Abandoned
(as per city personnel)

W . R I

CB-10-3

MH-10-3

7' off back of bk
where 4" VCP ties
into 8" VCP

1000

115

125

00624

00623

00622

8" W.M.

24" Row W.M.

Greenwood Avenue

12" Stm.

8" Stm.

8"

27" Stm.

8" Sdn.

00621

8" San.

00620

1000 W. Reventis

Frosty
Boy →

1004 W. Riverview Ave.

Surface Drainage
End 8" Pipe

Ex. 6" 40
50m

wh. service
Ex. 6" unit.

9" x 1" Tee
Ex. 4" ADS

8" ADS
N-12 pipe
C.B. #1

Plug old 8" unit
under drain and
removed it between
New C.B.'s

